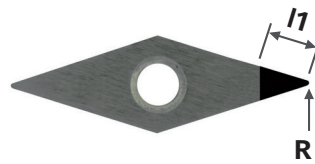


5610	Type	Design	R	$\alpha$	L1
	VCMT	11 03 010	0.10	10°	2.50
	VCMT	11 03 020	0.20	10°	2.50



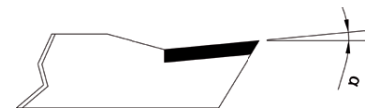
Gamme économique  
Low cost range  
Kostengünstig Reihe

5620	Type	Design	R	$\alpha$	L1
	VCMW	11 03 005	0.05	0°	2.50
	VCMW	11 03 010	0.10	0°	2.50
	VCMW	11 03 015	0.15	0°	2.50
	VCMW	11 03 020	0.20	0°	2.50

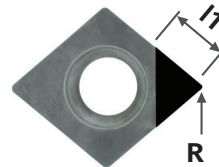


PCD 	HSC	ISO
	0-10° $\lambda$	

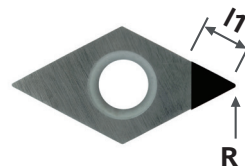
5630	Type	Design	R	$\alpha$	L1
	CCMW	06 02 005	0.05	0°	2.00
	CCMW	06 02 010	0.10	0°	2.00
	CCMW	06 02 020	0.20	0°	2.00



Type	Design	R	$\alpha$	L1
CCMW	09 T3 010	0.10	0°	2.50
CCMW	09 T3 020	0.20	0°	2.50



5640	Type	Design	R	$\alpha$	L1
	DCMW	07 02 005	0.05	0°	2.00
	DCMW	07 02 010	0.10	0°	2.00
	DCMW	07 02 015	0.15	0°	2.00
	DCMW	07 02 020	0.20	0°	2.00



Type	Design	R	$\alpha$	L1
DCMW	11 T3 005	0.05	0°	2.50
DCMW	11 T3 010	0.10	0°	2.50
DCMW	11 T3 015	0.15	0°	2.50
DCMW	11 T3 020	0.20	0°	2.50

5650	Type	Design	R	$\alpha$	L1
	TCMW	11 02 010	0.10	0°	2.00
	TCMW	11 02 020	0.20	0°	2.00

